

Q17 STUDIOS



SPACE DOSSIER



©2022



DOSSIER



TECHINCAL INFO

550m² 5,5m in height

Daylight 48m of skylights

20,5m of camera angle

**Kitchen, bathroom & loft
location**

39m² dressing room

85kw power

Cyclorama 6m wide, 5m long & 3,6m high

Area for water effects

Vehicle access & private parking

Private resting area with shower

**Total privacy and
discretion**

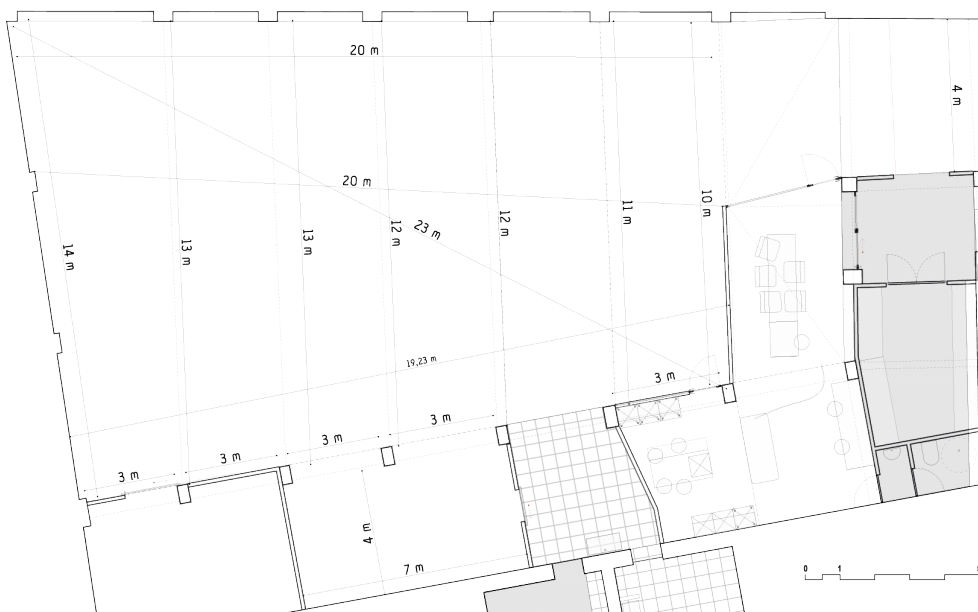
Library with press & magazines



GENERAL FLOOR PLANT

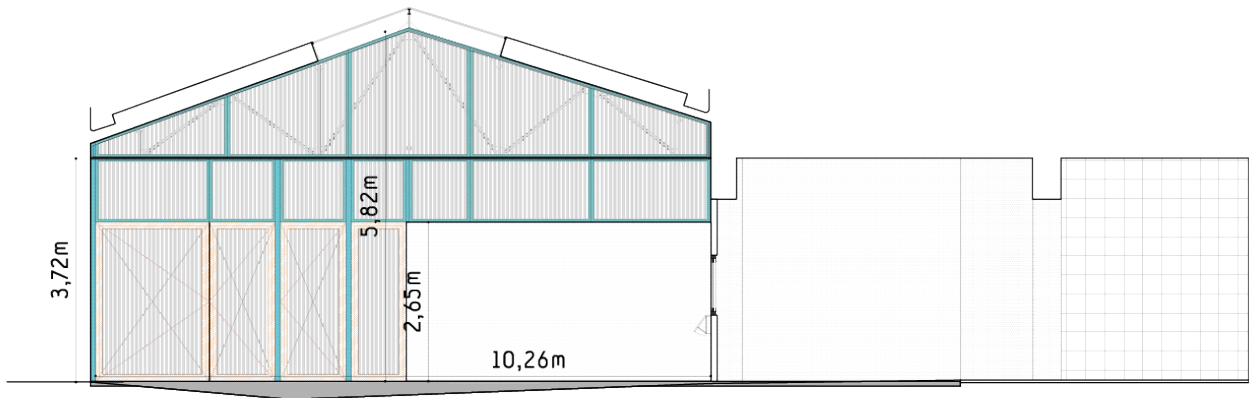


PRINCIPAL SPACE FLOOR PLAN

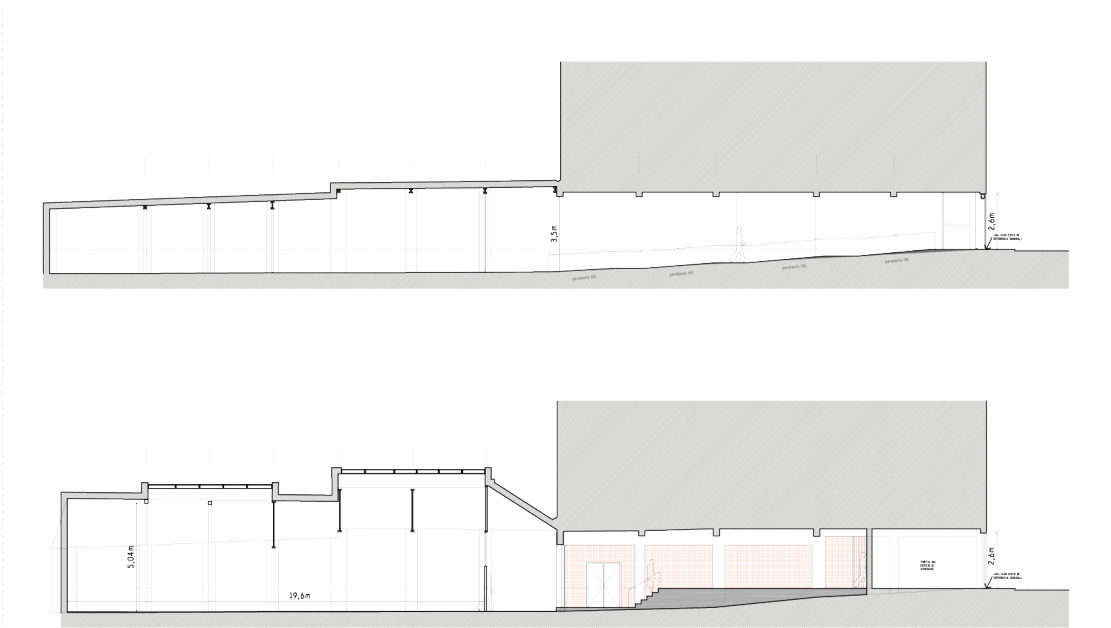




TRANSVERSAL SECTION



LONGITUDINAL SECTIONS





Calle Quintiliano, 17
28002 Madrid, España
+34 915 63 11 19

ENQUIRIES

info@q17.es